

BL0104-21-72 BLUE / SUPER BRIGHT RED
SUPER BRIGHT GREEN

Features

- HIGH VISIBILITY.
- WATERPROOF PACKAGE WITH HOOD SUITABLE FOR OUTDOOR AND INDOOR INFORMATION BOARDS.
- CAN PRODUCE ANY COLOR IN VISIBLE SPECTRUM, INCLUDING WHITE LIGHT.

Description

The Blue source color devices are made with GaN on SiC Light Emitting Diode.

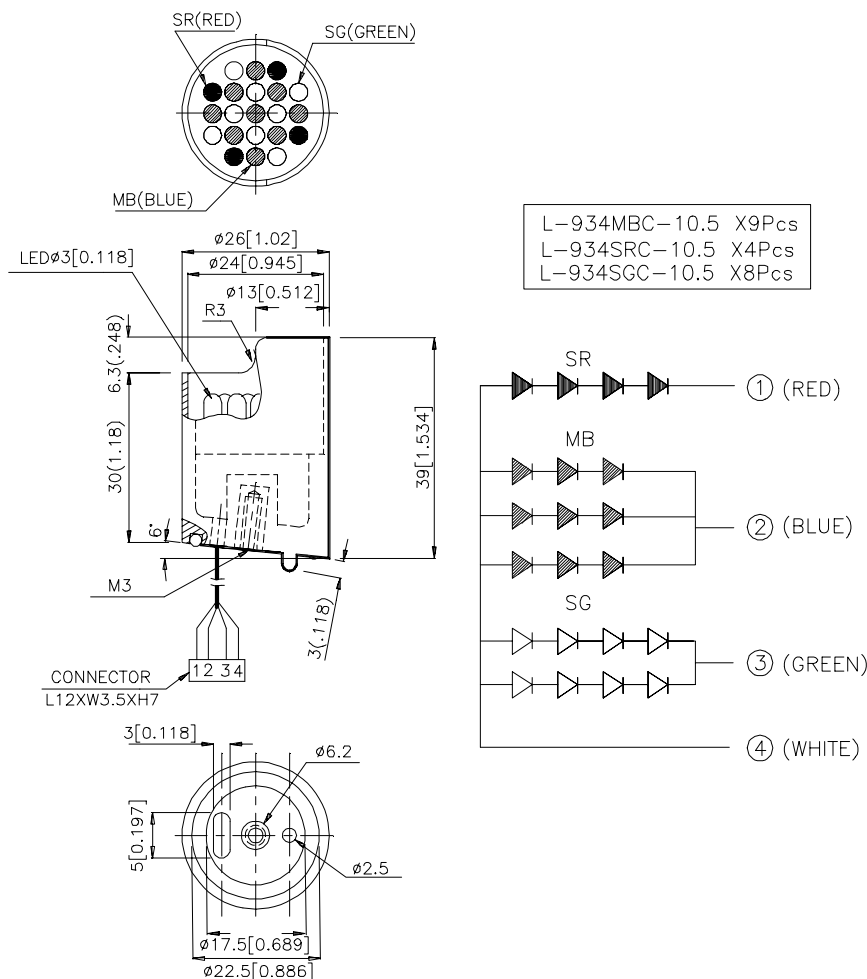
Static electricity and surge damage the LEDs. It is recommended to use a wrist band or anti-electrostatic glove when handling the LEDs.

All devices, equipment and machinery must be electrically grounded.

The Super Bright Red source color devices are made with Gallium Aluminum Arsenide Red Light Emitting Diode.

The Super Bright Green source color devices are made with Gallium Phosphide Green Light Emitting Diode.

Package Dimensions



Notes:

1. All dimensions are in millimeters (inches).
2. Tolerance is ± 0.25 (0.01") unless otherwise noted.
3. Specifications are subject to change without notice.

Electrical / Optical Characteristics at T_A=25°C

Symbol	Parameter	TYPE	Min.	Typ.	Max.	Units	Test Conditions
I _v	Luminous Intensity	MB	180	300		mcd	I _F =20mA
		SR	650	1800			I _F =20mA
		SG	480	1200			I _F =20mA
2θ1/2	Viewing Angle			40		deg	
V _F	Forward Voltage	MB		11.4	13.5	V	I _F =60mA
		SR		7.4	10		I _F =20mA
		SG		8.8	10		I _F =40mA
λ _P	Peak Wavelength	MB		430		nm	I _F =60mA
		SR		660			I _F =20mA
		SG		565			I _F =40mA
λ _D	Dominant Wavelength	MB		466		nm	I _F =60mA
		SR		640			I _F =20mA
		SG		568			I _F =40mA
Δλ _{1/2}	Spectral Line Half-width	MB		60		nm	I _F =60mA
		SR		20			I _F =20mA
		SG		30			I _F =40mA
I _R	Reverse Current				60	uA	V _R = 5V

Absolute Maximum Ratings at T_A=25°C

Parameter	Type	Units	
Power dissipation	MB	1600	mW
	SR		
	SG		
DC Forward Current	MB	90	mA
	SR	30	
	SG	50	
Reverse Voltage	5	V	
Operating Temperature	-40 To +70	°C	
Storage Temperature	-40 To +85	°C	