

15

KLB 13

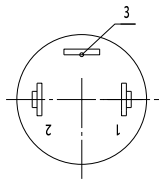
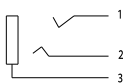
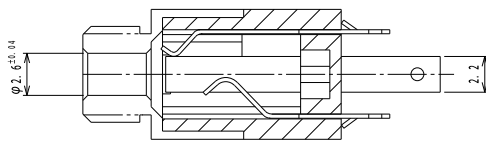
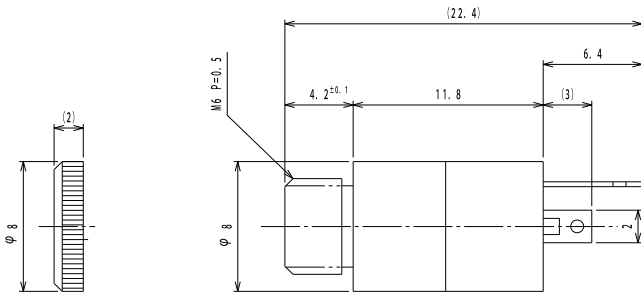
Jack connectors



Jack chassis socket acc. to JIS C 6560 JC25J3A, 2.5 mm, 3 poles/stereo, with solder eyes, upright version, for back side mounting

15

KLB 13



Environmental conditions

Temperature range -20 °C/+70 °C

Materials

Insulating body PBT GF, V-0 according to UL94, black or white
 Contact spring Cu alloy, nickel-plated/gold-plated
 Housing CuZn, nickel-plated
 Knurled nut CuZn, nickel-plated

Mechanical data

Mating cycles ≥ 5000
 Insertion force 5–20 N
 Withdrawal force 4–20 N

Electrical data (at T_{amb} 20 °C)

Contact resistance ≤ 50 mΩ
 Rated current 0,5 A
 Rated voltage 34 V AC/DC
 Rated impulse voltage 500 V/60 s
 Insulation resistance ≥ 100 MΩ

Associated products

Counterparts
 ☞ KLS 13

Accessories
 ☞ 1597 02 ☞ 1597 04

15

KLB 13

Designation	Pole Number	PU (Pieces)	MDQ (Pieces)
KLB 13	3	100	500

Packaging:

in bulk, in a cardboard box or a plastic bag