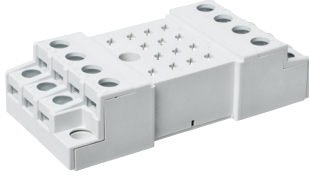


Sockets and accessories

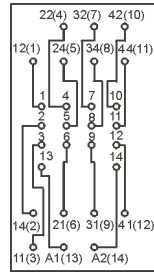
GZ14

For R15 - 4 CO

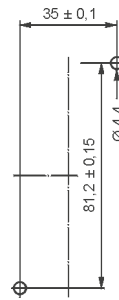
Screw terminals
Max. tightening moment
for the terminal: 0,7 Nm
On panel mounting
96,8 x 46,4 x 24,5 mm
Four poles
10 A, 250 V AC



Connection diagram

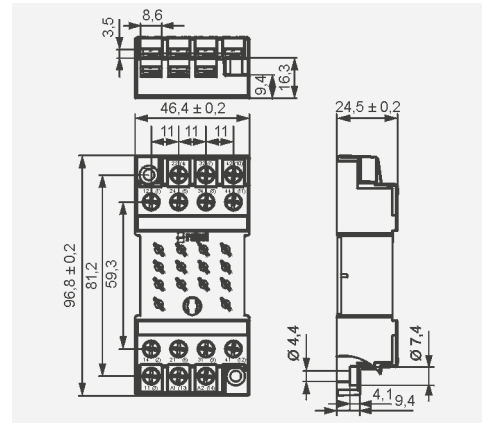


Mounting dimensions



GZ14 0737

Dimensions

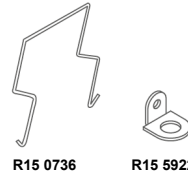
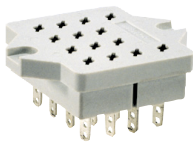


Accessories

GOP14

For R15 - 4 CO

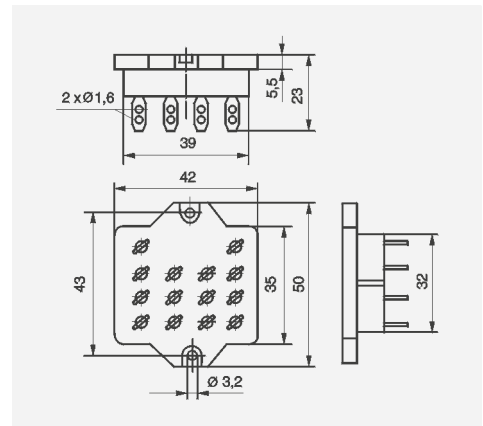
Solder terminals
50 x 42 x 23 mm
Four poles
10 A, 250 V AC



R15 0736

R15 5922

Dimensions



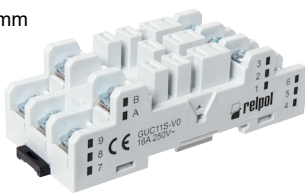
Accessories

GUC11S-V0

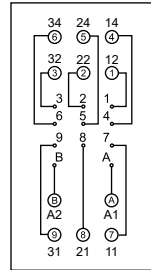
For RUC faston 4,8x0,5, RUC-M

Screw terminals
Cross section of the cables: max. 1 x 4 mm²
/ 2 x 2,5 mm² (1 x 12 / 2 x 14 AWG),
min. 1 x 0,25 mm² (1 x 23 AWG)
Max. tightening moment
for the terminal: 0,7 Nm

35 mm rail mount
acc. to EN 60715
81,5 x 35,5 x 26,5 mm
Three poles
16 A, 250 V AC

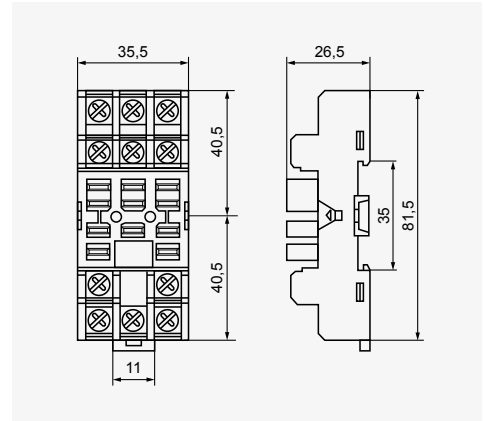


Connection diagram



MBA

Dimensions



Accessories

Ⓢ For RUC faston 4,8 x 0,5 and RUC-M, with GUC11S-V0 socket, max. switching voltages and coil voltages of relays are limited to 250 V AC / DC.