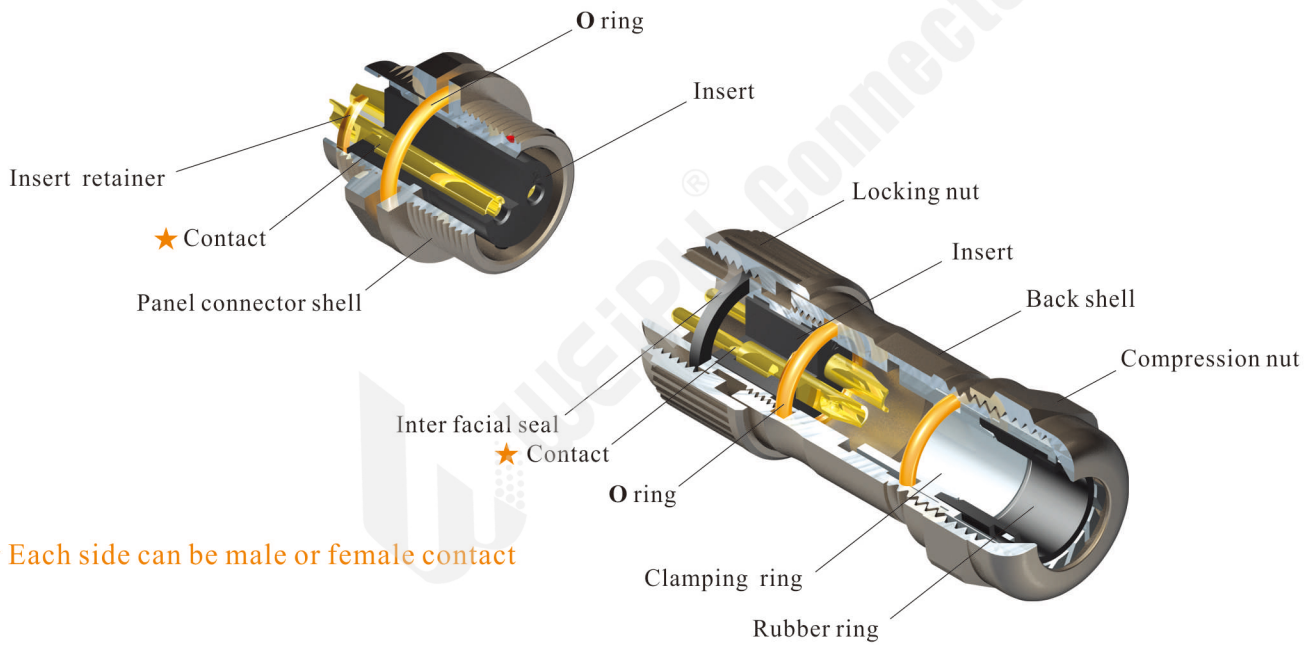




- ST12 Series IP67
- Threaded coupling



★ Each side can be male or female contact

### Material and spec

Coupling	Threaded
Shell material	Zinc alloy with black nickel plating
Insert material	PPS, max temperature 260 °C
Contact material	Brass with gold plating
Termination	Solder
IP rating	IP67
Mating cycle	500
Temperature range	-40°C ~ +85°C
Insulation resistance (MΩ)	2000

# ST12 Series IP67

**ST  
12**

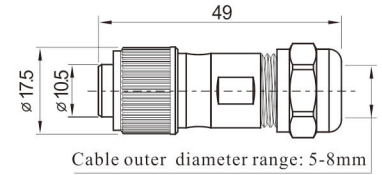


**Cable connector**  
Mate with ST1211, ST1212,  
ST1213, ST1214

ST1210 / P\_ Male contact

ST1210 / S\_ Female contact

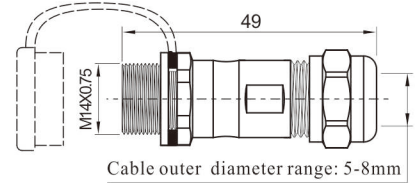
Number of contact



ST1211 / P\_

ST1211 / S\_

**In-line cable connector**  
Mate with ST1210

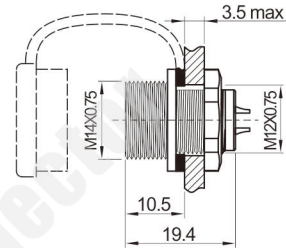
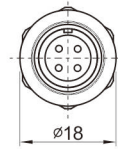


ST1212 / P\_

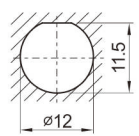
ST1212 / S\_

**Rear-nut mount**  
Mate with ST1210

Number of contact



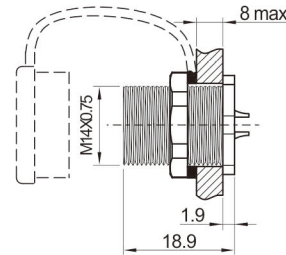
Panel cutout



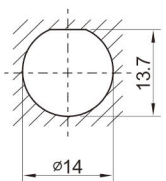
ST1213 / P\_

ST1213 / S\_

**Front-nut mount**  
Mate with ST1210



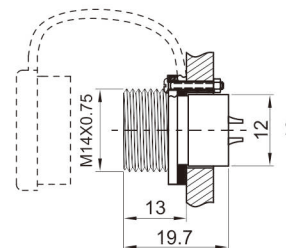
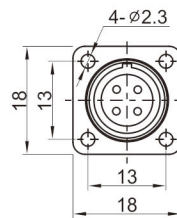
Panel cutout



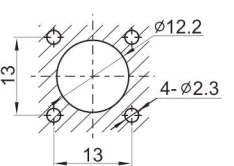
ST1214 / P\_

ST1214 / S\_

**Square flange**  
Mate with ST1210



Panel cutout



## Solder contact spec

Number of contact	2	3	4	5	6	7	9
Male contact face view							
Rated current (A)	13	13	5	5	5	5	3
Contact diameter (mm)	1.6	1.6	1	1	1	1	0.7
Rated voltage (AC.V)	250	250	200	180	125	125	125
Test voltage(AC.V) 1 min	1500	1500	1500	1000	1000	1000	1000
Contact resistance (mΩ)	2.5	2.5	5	5	5	5	10
Wire size (mm <sup>2</sup> / AWG)	≤2/14	≤2/14	≤0.75/18	≤0.75/18	≤0.75/18	≤0.75/18	≤0.5/20